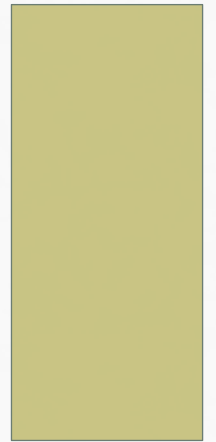


TOWARDS AN INTERNATIONALLY ORIENTED CURRICULUM

ELIANE VAN HERWAARDEN & JOKE ALINK



- 
- Eliane van Herwaarden & Joke Alink
 - Theo Thijssen Institute (Bachelor of Education)
University of Applied Sciences Utrecht,
The Netherlands

INTRODUCTION

1. J.

- - HU-policy: Blended learning
- - Internationalization
- - ITT and Blended learning
- - What does it mean for teachers/lecturers
- - What does it mean for the students
- - hereafter

HU POLICY: BLENDED LEARNING

2. J

- - Ambition
- - Blended learning learning environment
- - Analysis of the present learning environment
- - Proces
- “Blended learning is a pedagogical approach which combines effective and social possibilities with active learning in the online environment.”
Dziuban, Hartman, and Moskal (2004, p.3)

BLENDED LEARNING

3. J.

Future Oriented

- Place and time
- flexible learning

Importancy of

- contact education
- Life Long Learning

Paperless desk/

- Sustainability

Blended environments



Het digitale platform is de organisator van het onderwijs



THE DIFFERENCE

- 4. J
- The teacher makes the difference!
- The teacher needs support
- A digital platform to organize education
- collaboration

INTERNATIONAL

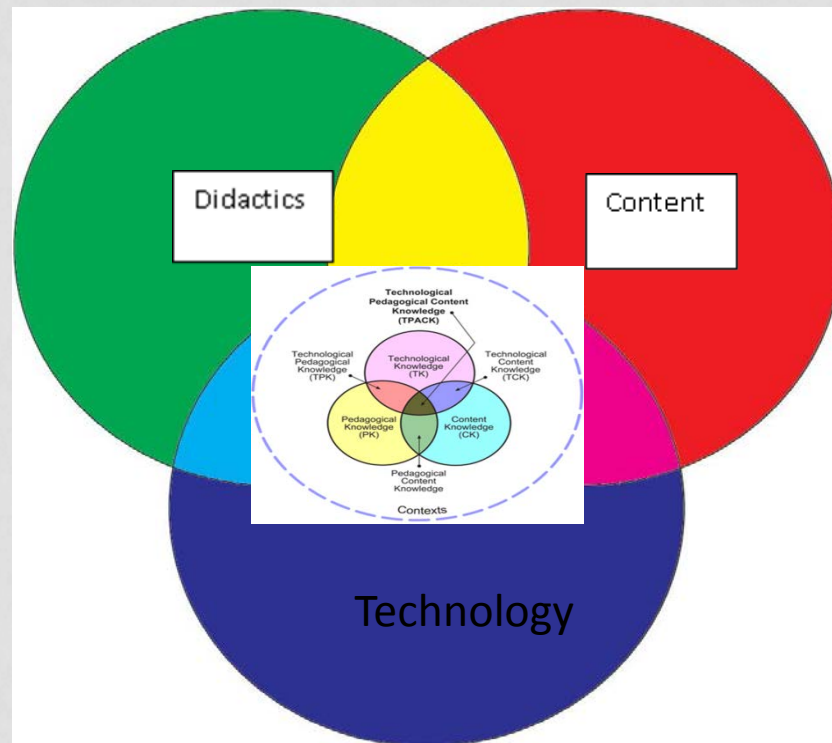
5. J

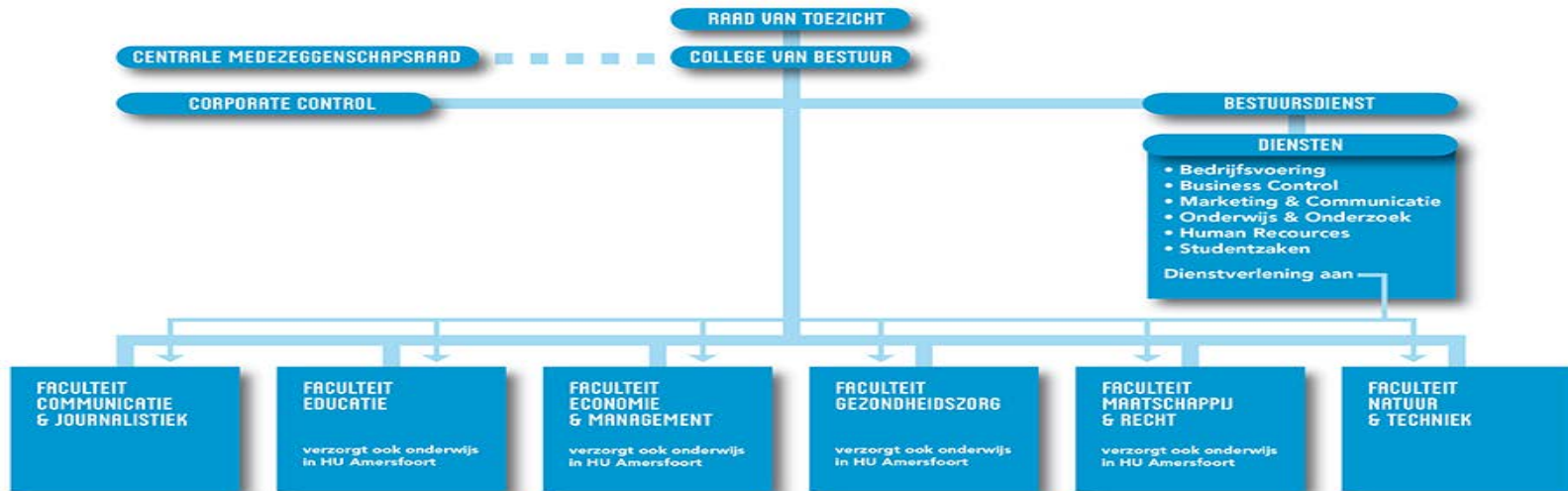
Internationalization

- - International contacts and collaboration with international partners
- - At home and abroad
- - Staff Mobility and Student Mobility to gain more experience and (work)skills

TPACK-MODEL

- 6. J
- Education and alignment between subject content, didactics and ICT-possibilities





- HU: 6 Faculties
- Each faculty has different institutes
- Faculty of Education has 4 institutes,
- **Institute Theo Thijssen (ITT)** is a bachelor of primary education, both in Utrecht and in Amersfoort

CURRICULUM

8. E

- ITT curriculum
- Internationalization in the ITT curriculum

HOW TO REALIZE?

9. E.

- - Development of a new curriculum
- - Delve into themes
- - Professionalization
- - Sustainability
- - Mobility
- - International – intercultural communication

FOR STUDENTS

10. E

- - Life long learning
- - Global awareness
- - Personal growth, partly responsible and Commission decision maker

WHAT LIES AHEAD OF US:

11. E

- tightening up in all areas
- Describing values and starting points
- What do we wish?!
 - Consistency
 - Possibilities
- Hot item for the HU.

ANY QUESTIONS ?

12. E/J

- Mail-adresses:
- Eliane.vanHerwaarden@hu.nl
- Joke.Alink@hu.nl